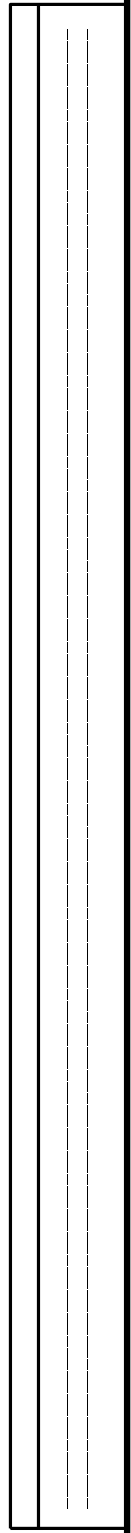
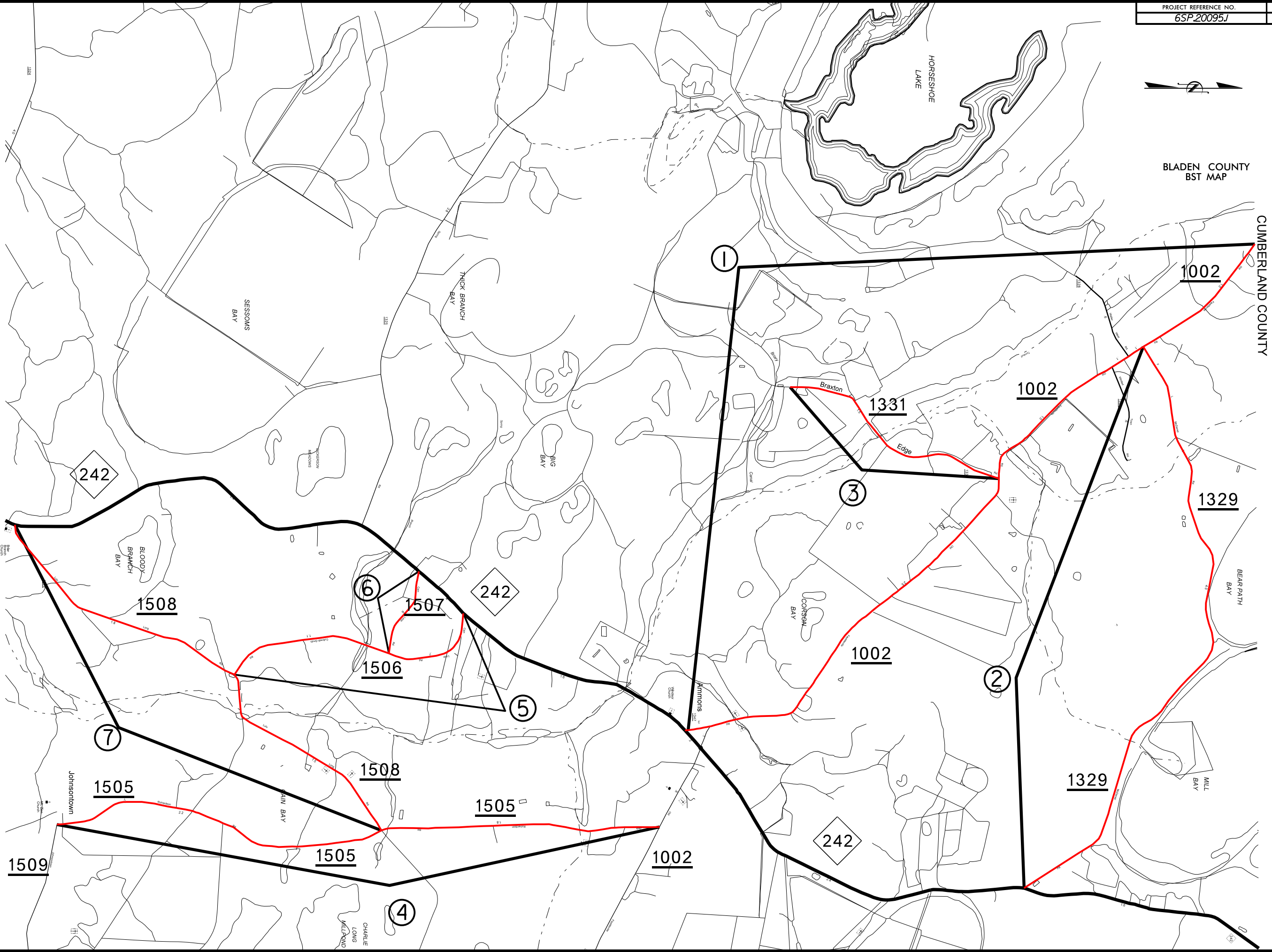
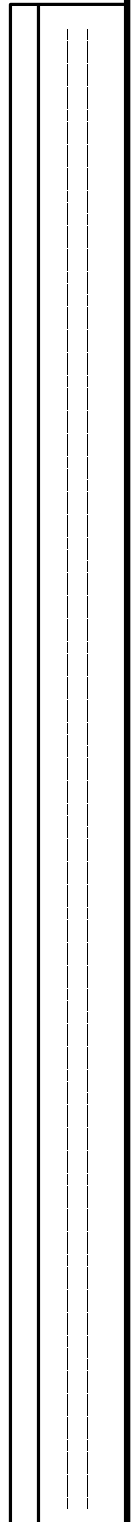
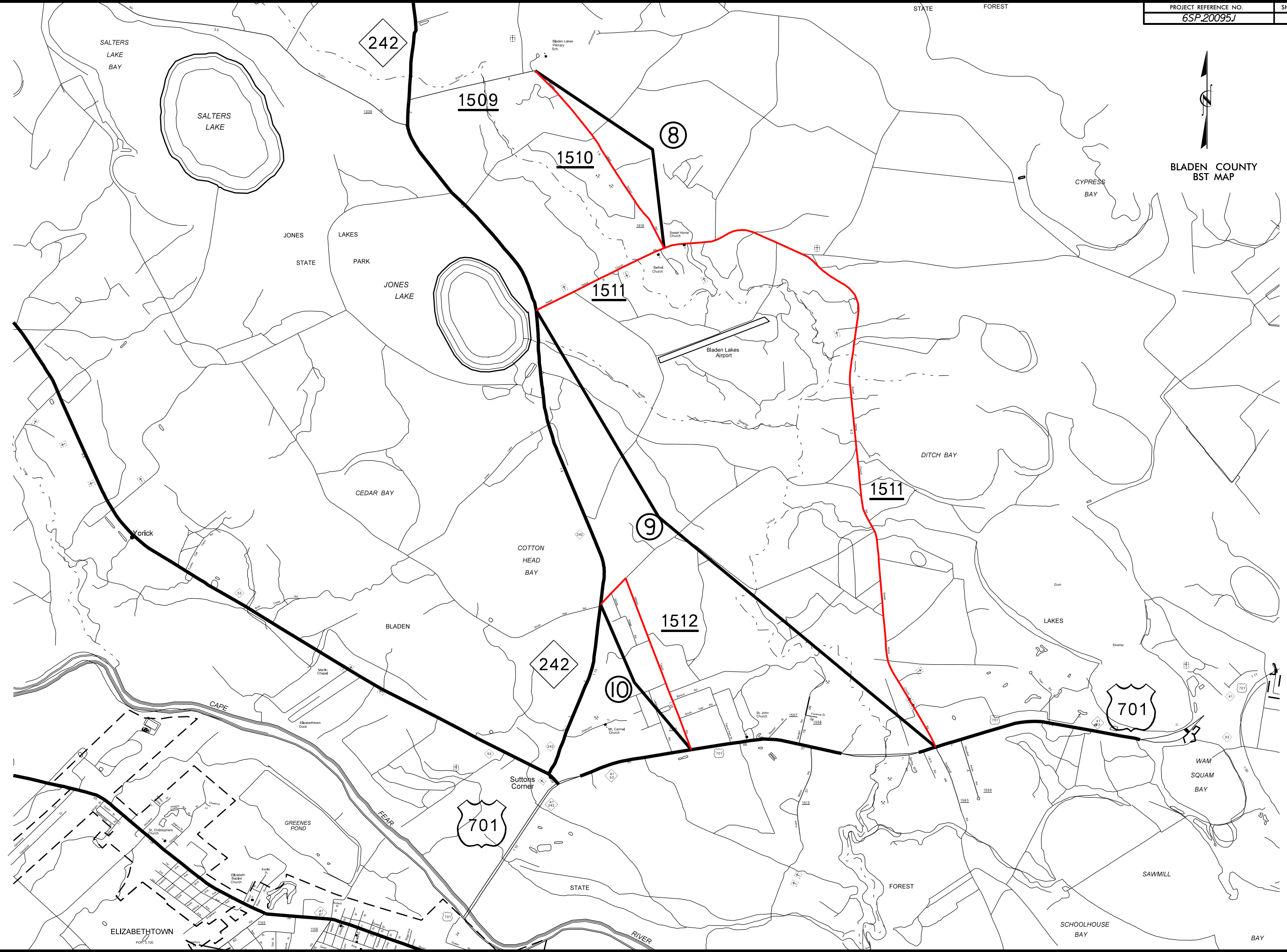
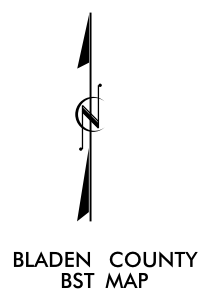


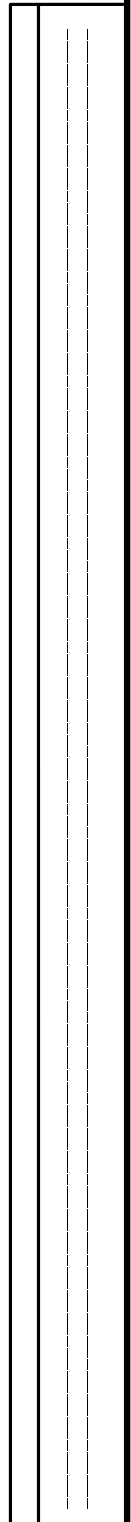
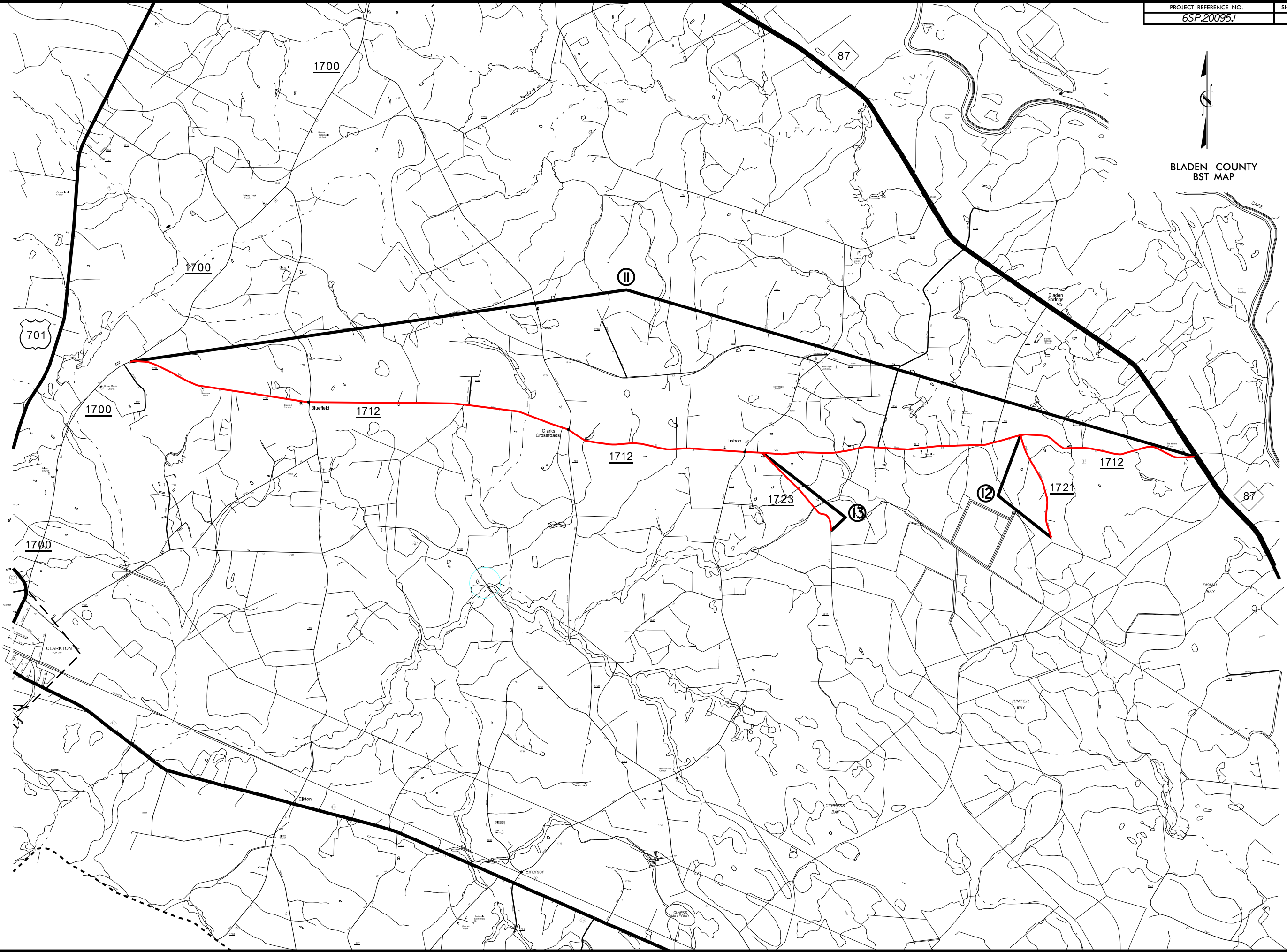
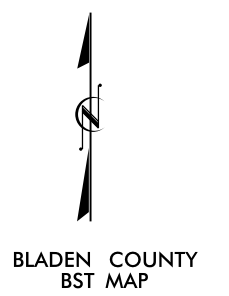


BLADEN COUNTY  
BST MAP

CUMBERLAND COUNTY

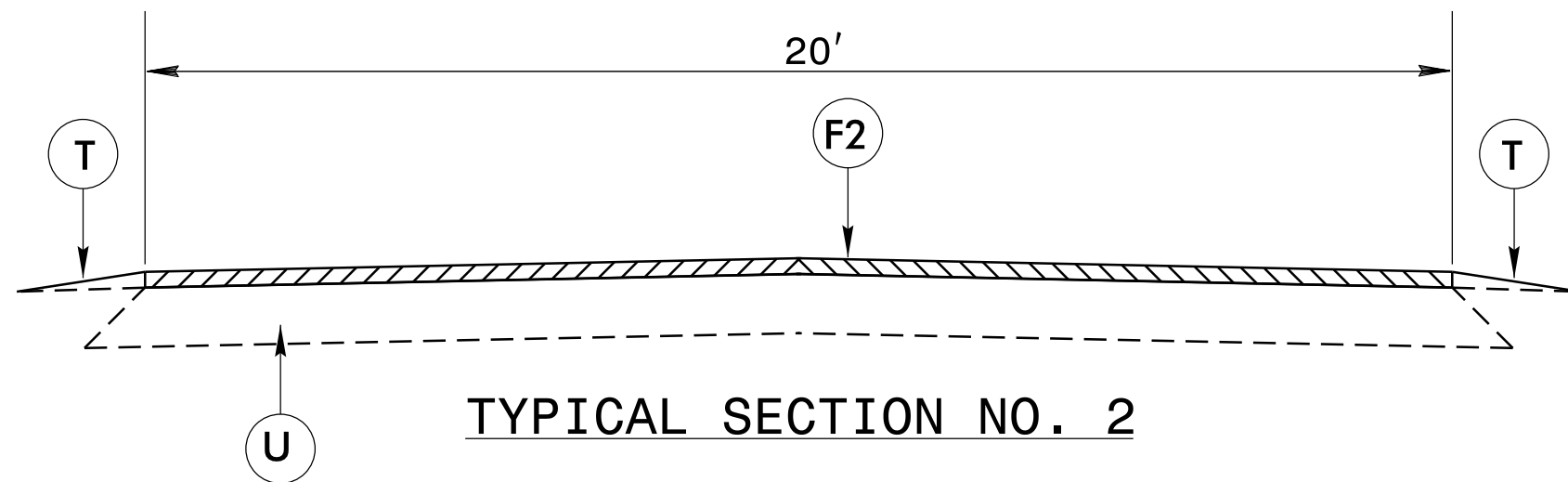
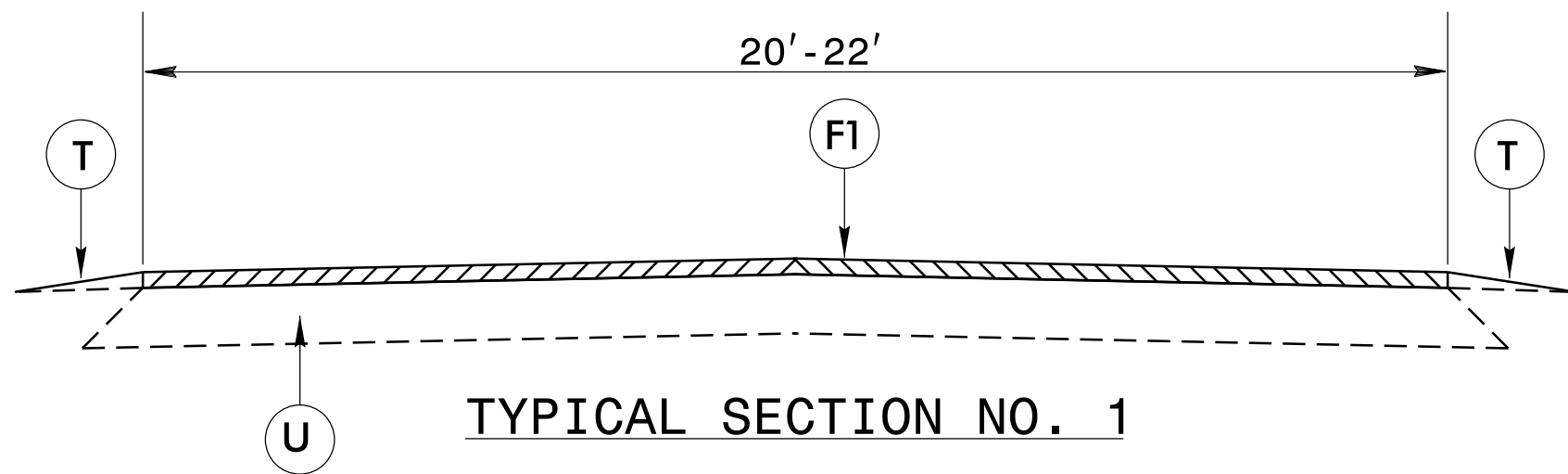






### PAVEMENT SCHEDULE

F1	SPLIT SEAL PLACED ACCORDING TO THE SPECIAL PROVISIONS
F2	TRIPLE SEAL PLACED ACCORDING TO THE SPECIAL PROVISIONS
T	EXISTING SHOULDER
U	EXISTING ASPHALT



# SUMMARY OF QUANTITIES

PROJECT NO. 6SP.20095.1	SHEET NO.
TOTAL NO.	

PROJECT	COUNTY	MAP	ROUTE	DESCRIPTION	TYP	LANES	LANE TYPE	FINAL SURFACE TESTING REQUIRED	WARM MIX ASPHALT REQUIRED	LENGTH	WIDTH	ASPHALT SURFACE TREATMENT, SPLIT SEAL	ASPHALT SURFACE TREATMENT, TRIPLE SEAL	4399000000-N TEMPORARY TRAFFIC CONTROL	4400000000-E STATIONARY WORK ZONE SIGN
NO		NO			NO					MI	FT	SY	SY	LS	SF
6SP.20095.1	Bladen	1	SR 1002	FROM: NC 242 MP 8.15 TO: CUMBERLAND COUNTY MP 13.06	1	2	2WU	NO	NO	4.91	22	63,372		1	326
		<b>TOTAL FOR MAP NO. 1</b>								<b>4.91</b>		<b>63,372</b>		<b>1</b>	<b>326</b>
6SP.20095.1	Bladen	2	SR 1329	FROM: SR 1002 MP 0.0 TO: NC 242 MP 4.01	1	2	2WU	NO	NO	4.01	20	47,051			73
		<b>TOTAL FOR MAP NO. 2</b>								<b>4.01</b>		<b>47,051</b>			<b>73</b>
6SP.20095.1	Bladen	3	SR 1331	FROM: SR 1002 MP 0.0 TO: DE MP 1.53	1	2	2WU	NO	NO	1.53	20	17,952			36
		<b>TOTAL FOR MAP NO. 3</b>								<b>1.53</b>		<b>17,952</b>			<b>36</b>
6SP.20095.1	Bladen	4	SR 1505	FROM: SR 1002 MP 0.0 TO: SR 1509 MP 3.91	1	2	2WU	NO	NO	3.91	20	45,877			109
		<b>TOTAL FOR MAP NO. 4</b>								<b>3.91</b>		<b>45,877</b>			<b>109</b>
6SP.20095.1	Bladen	5	SR 1506	FROM: NC 242 MP 0.0 TO: NC 242 MP 1.22	1	2	2WU	NO	NO	1.22	20	14,315			145
		<b>TOTAL FOR MAP NO. 5</b>								<b>1.22</b>		<b>14,315</b>			<b>145</b>
6SP.20095.1	Bladen	6	SR 1507	FROM: SR 1508 MP 0.0 TO: SR 1506 MP 1.07	1	2	2WU	NO	NO	1.07	20	12,555			109
		<b>TOTAL FOR MAP NO. 6</b>								<b>1.07</b>		<b>12,555</b>			<b>109</b>
6SP.20095.1	Bladen	7	SR 1508	FROM: NC 242 MP 0.0 TO: SR 1505 MP 3.17	1	2	2WU	NO	NO	3.17	20	37,195			109
		<b>TOTAL FOR MAP NO. 7</b>								<b>3.17</b>		<b>37,195</b>			<b>109</b>
6SP.20095.1	Bladen	8	SR 1510	FROM: SR 1511 MP 0.0 TO: SR 1509 MP 1.39	1	2	2WU	NO	NO	1.39	20	16,309			73
		<b>TOTAL FOR MAP NO. 8</b>								<b>1.39</b>		<b>16,309</b>			<b>73</b>
6SP.20095.1	Bladen	9	SR 1511	FROM: US 701 MP 0.0 TO: NC 242 MP 5.19	2	2	2WU	NO	NO	5.19	20		60,896		109
		<b>TOTAL FOR MAP NO. 9</b>								<b>5.19</b>			<b>60,896</b>		<b>109</b>
6SP.20095.1	Bladen	10	SR 1512	FROM: US 701 MP 0.0 TO: NC 242 MP 1.38	1	2	2WU	NO	NO	1.38	20	16,192			73
		<b>TOTAL FOR MAP NO. 10</b>								<b>1.38</b>		<b>16,192</b>			<b>73</b>
6SP.20095.1	Bladen	11	SR 1712	FROM: NC 87 MP 0.0 TO: SR 1700 MP 10.70	1	2	2WU	NO	NO	10.7	22	138,101			653
		<b>TOTAL FOR MAP NO. 11</b>								<b>10.7</b>		<b>138,101</b>			<b>653</b>
6SP.20095.1	Bladen	12	SR 1721	FROM: SR 1712 MP 0.0 TO: END PVMT MP 1.15	1	2	2WU	NO	NO	1.15	20	13,493			36
		<b>TOTAL FOR MAP NO. 12</b>								<b>1.15</b>		<b>13,493</b>			<b>36</b>
6SP.20095.1	Bladen	13	SR 1723	FROM: SR 1712 MP 0.0 TO: END SECT MP 1.22	1	2	2WU	NO	NO	1.22	20	14,315			36
		<b>TOTAL FOR MAP NO. 13</b>								<b>1.22</b>		<b>14,315</b>			<b>36</b>
		<b>TOTAL FOR PROJ NO. 6SP.20095.1</b>								<b>40.85</b>		<b>436,727</b>		<b>1</b>	<b>1,887</b>
		<b>GRAND TOTAL</b>								<b>40.85</b>		<b>436,727</b>		<b>1</b>	<b>1,887</b>